

College of Home Science Nirmala Niketan



Community Resource Management

- Ride The Future Wave

S. Y. B.Sc. Orientation
24th June 2023

CRM Faculty



Department of Community Resource Management, College of Home Science Nirmala Niketan



Tech
Mahindra

ITC HOTELS
RESPONSIBLE LUXURY

THE FERN
HOTELS & RESORTS
Leading Environmentally Sensitive Hotels

FLY SMART
go AIR

B

IndiGo

RAMADA
i Hotel & Convention Centre

Emirates

GVK

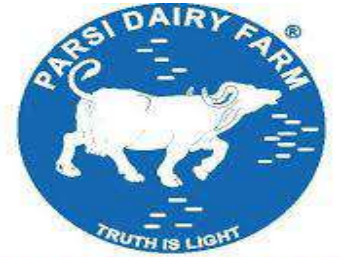
SOTC

Fortis

For Holidays.

Chhatrapati Shivaji
INTERNATIONAL AIRPORT
MUMBAI

Kokilaben Dhirubhai Ambani
hospital & medical research institute



PARSI DAIRY FARM

Every Life Matters

The Oberoi Group

Being human



VEENA WORLD
Travel. Explore. Celebrate.

LARSEN & TOUBRO

amazon

TRIDENT
Department of Community Resource Management,
College of Home Science Nirmala Niketan
Nariman Point, Mumbai

महाराष्ट्र लडम्भ

..and that's not all....many more companies of repute!

1. Amazon India
2. SOTC Travels
3. TUI UK Travels
4. The Oberoi Hotels
5. Parsi Dairy Farm
6. The Maharashtra Times
7. Grand Hyatt
8. Thane Vaibhav Newspaper
9. Actor Prepares by Anupam Kher
10. The Orchid Mumbai
11. Emirates
12. Being Human
13. Meluha – The Fern
14. Larsen & Toubro
15. The Wishing Factory
16. Bright Future India
17. La Opala
18. Tech Mahindra
19. Jet Airways
20. GVK Mumbai Airport
21. Solitaire Media Entertainment
22. Trident Hotels
23. Veena World
24. Dr. BMN College, SNDT Matunga
25. SVT College, Juhu
26. Rizvi Hotel Mgt College, Bandra
27. SNDT Vile parle
28. DY Patil College of Design
29. Dhirubhai Ambani Hospital
30. Vistara Airlines
31. Taj Hotels, Mumbai
32. Fildalgo, Goa
33. Kotak Insurance
34. Home Linen

The department offers FOUR unique career fields!

01

Interior Design



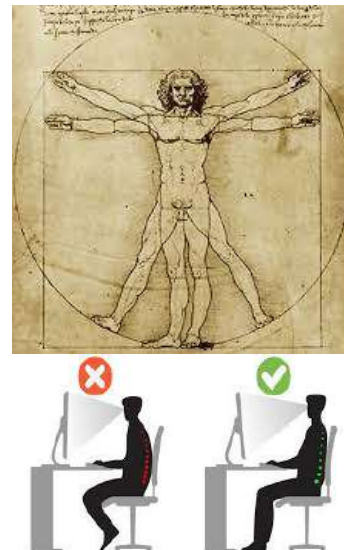
02

Hospitality Studies



03

Ergonomics



04

Management Studies



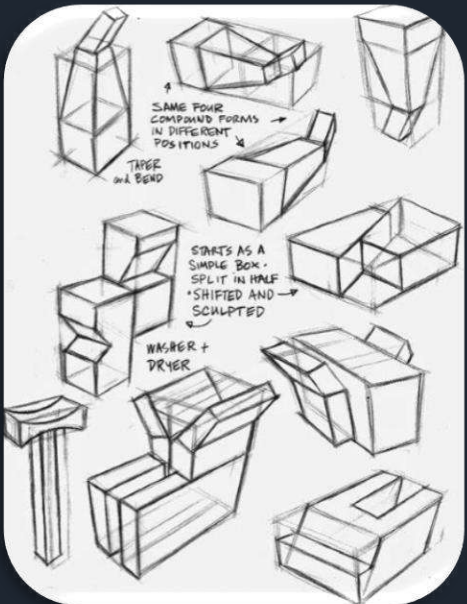
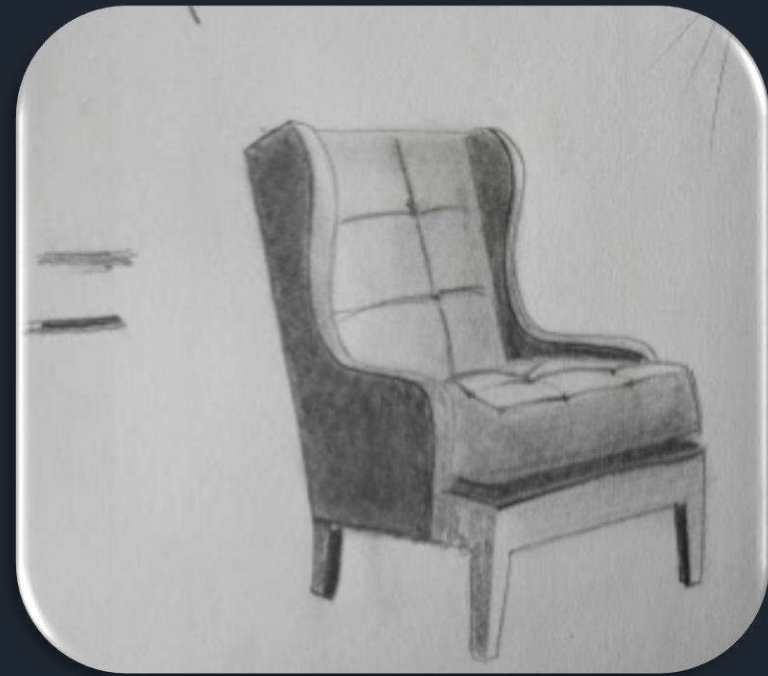
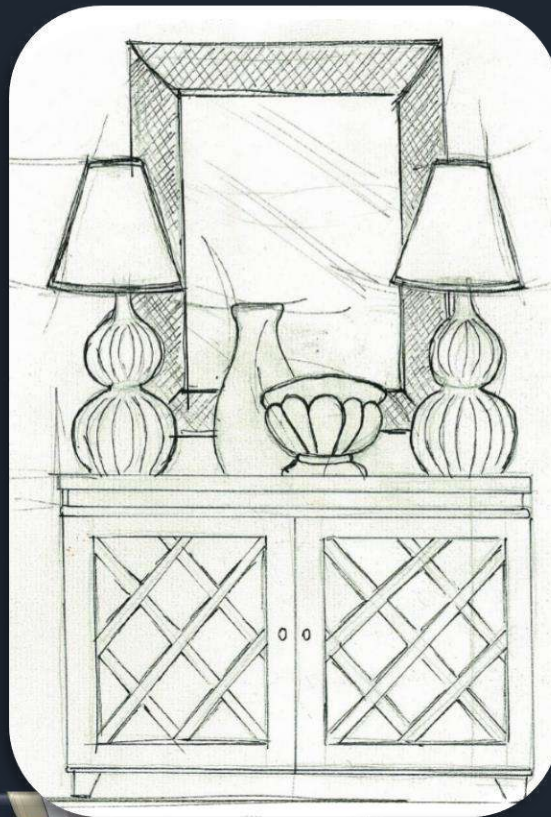
- Aesthetics in Interiors (Th) – F.Y.B.Sc. (sem 1)
- Aesthetics in Design (Pr) – F.Y.B.Sc. (sem 1)

- Residential Interior Design (Th) – T.Y.B.Sc. (sem 5)
- Residential Furnishing and Kitchen Planning – T.Y.B.Sc. (sem 6)
- Residential Interiors (Pr) – T.Y.B.Sc. (sem 5)
- Rendering and Presentation Techniques (Pr) – T.Y.B.Sc. (sem 5)
- Kitchen Planning (Pr) – T.Y.B.Sc. (sem 6)
- Residential Furnishings (Pr) – T.Y.B.Sc. (sem 6)

01

Interior Design

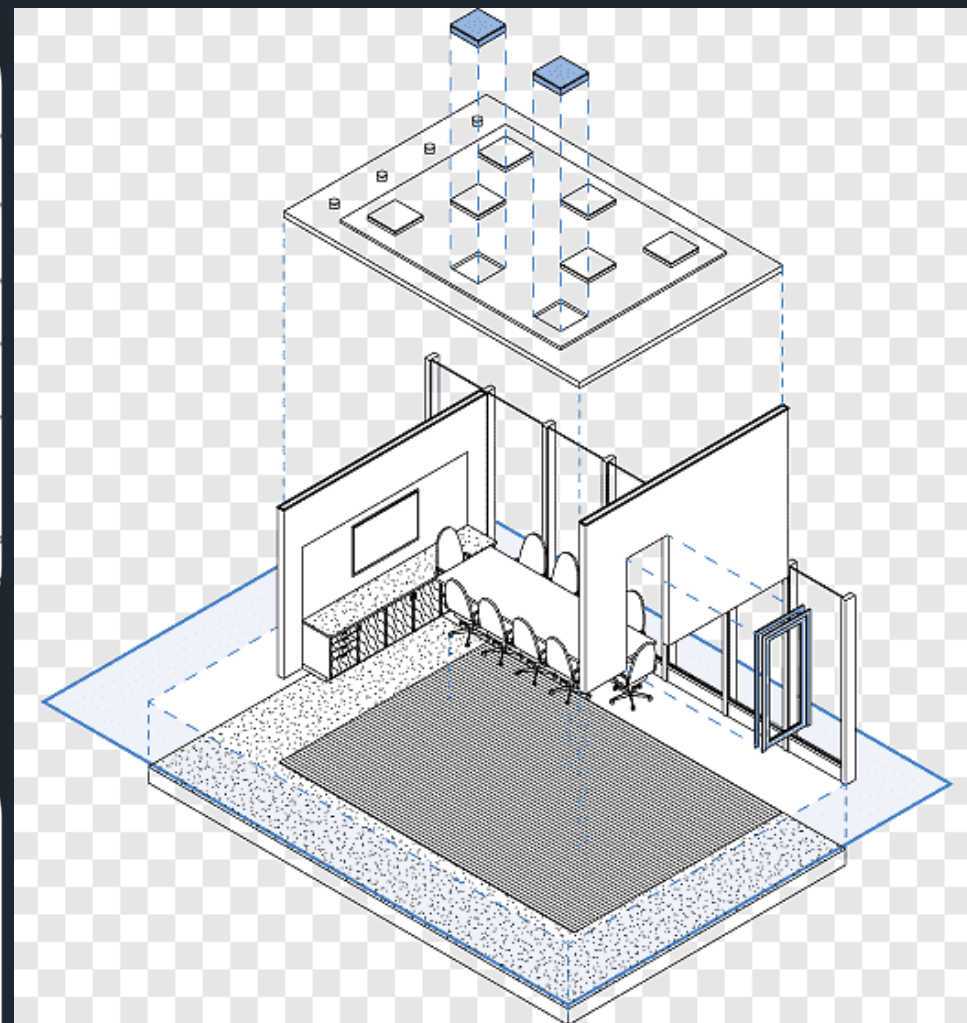
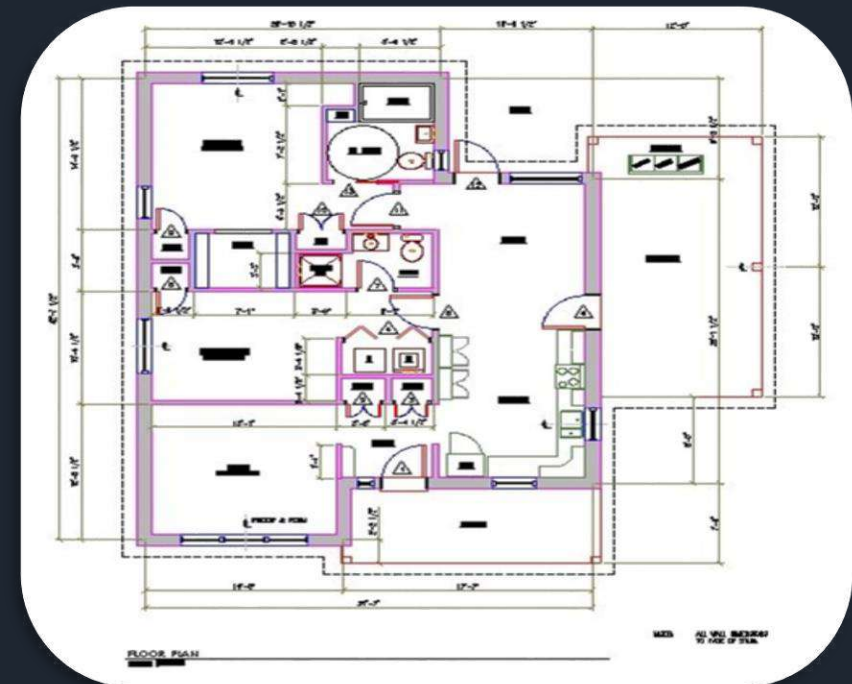
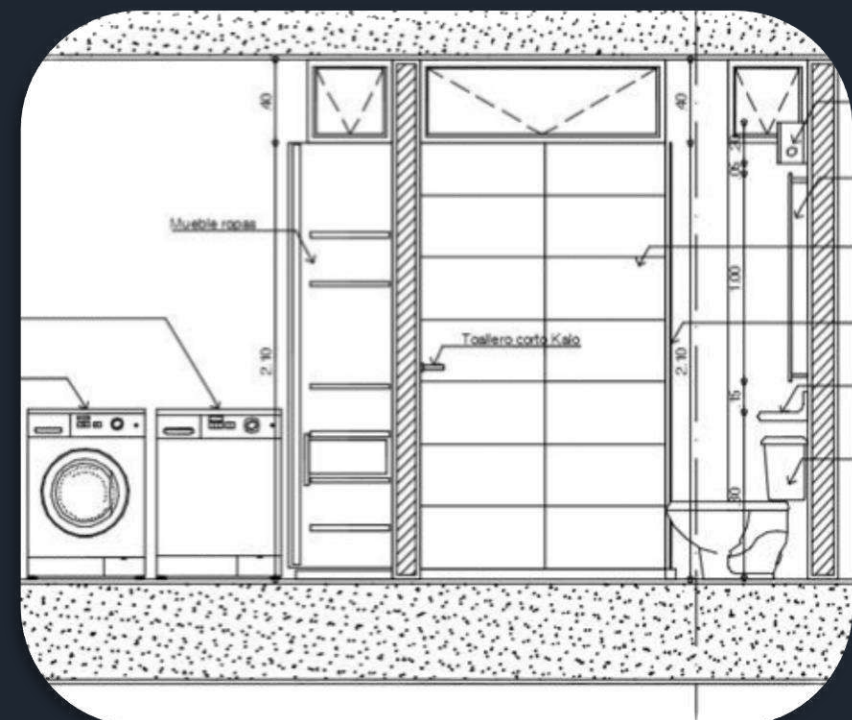
A glimpse





- From the drafting board to the Computers.....
With the pencil – pen to stylus.....





Auto CAD Revit SketchUp

Department of Community Resource Management, College of Home Science Nirmala Niketan

- Interior Designer
- Interior Decorators
- Aesthetic Consultants

- Landscape Designer
- Green Interior Design Consultant

- Graphic Designers
- Commercial Artists
- Digital Painters



- Colour Consultant
- Product Designers

- CAD Drafter and Designers
- Interior Stylist
- Design Support Staff



ARTI KAPADIA
2014 - 15 CRM Batch
interior Designer
DWG Design



HEMANGI VIRA
2015 – 16 CRM Batch
Interior Designer
Alchemy Design Studio



VIDYA IYER
2003 – 04 : CRM Batch
Brand Manager –
Colour
Asian Paints



KASHYAPI NAGRECHA THACKER
2007 – 2008 CRM Batch
Entrepreneur
Aashirwad Landscapes (Owner) &
Shiv Shakti Flora (Co-Owner)

Department of Community Resource Management
College of Home Science Nirmala Niketan



MUNIRA HARDAWALA
2015-2016 CRM Batch
PROPRIETOR/INTERIOR DESIGNER
Maimoon Int.

- Intro to Tourism & Hospitality Ind (Th) – F.Y.B.Sc. (sem 2)
- Skills for the Hospitality Industry (Pr) – F.Y.B.Sc. (sem 2)
- Hotel Front Office (Th) – T.Y.B.Sc. (sem 5)
- Hotel Housekeeping (Th) – T.Y.B.Sc. (sem 6)
- Hotel Front Office Operations (Pr) – T.Y.B.Sc. (sem 5)
- Managing Housekeeping Operations (Pr) – T.Y.B.Sc. (sem 5)
- Training and Dev. for the Hospi Ind (Pr) – T.Y.B.Sc. (sem 6)
- Events in Hospitality Industry (Pr) – T.Y.B.Sc. (sem 6)

02



Personal Grooming

Soft skill Development







Getting them Industry ready!
...from Personal Grooming to honing
their skills...



Hyatt Regency



Holiday Inn



Trident, Nariman Point

The Grand Hyatt



Novotel, Mumbai



Renaissance, Powai



Meluha – The Fern



The Oberoi, Nariman Point



The Park, Navi Mumbai

INTERNSHIP



Event Management Experience



- ▶ Mom's Day out – Retro Back to College (2016 – 17)
- ▶ Hawaiiin Feista (2017 – 18)
- ▶ Aamchi Mumbai (2018 –19)
- ▶ Colours of Life (2019 –



OCER -
OCLD
Selection
Since 2010

Every year we
participate
and emerge
victorious!

One Day Internships

Nothing is more
EXPENSIVE
Than a missed
opportunity!





Uniforms provide a more professional look and attitude!

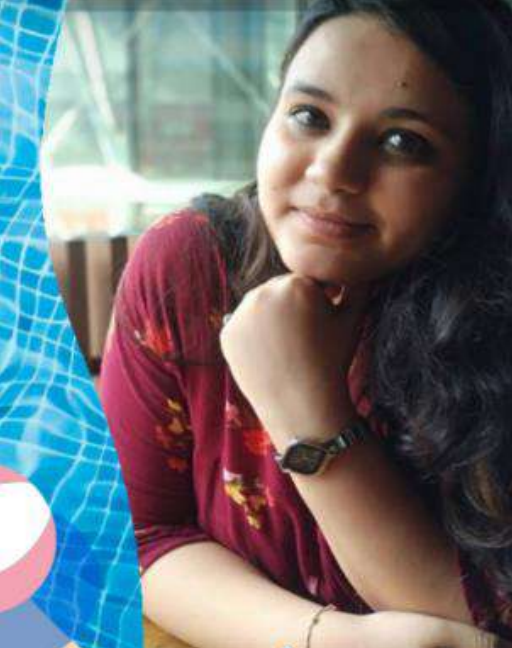
- **Hotel Front Office**
- **Hotel Housekeeping**
- **F & B Service**
- **F & B Production**

- **Hospital Administration**
- **Cruise Ship Staff**
- **Club Management**
- **MICE Tourism**
- **Event Management**
 - ▶ **Wedding Planners**
 - ▶ **Event Managers**
 - ▶ **Sports Event Planners**
 - ▶ **Corporate Event Planners**



- **Travel Executive**
- **Travel Agent**
- **Travel Consultanat**
- **Tourism Manager**
- **Tourist Guide**
- **Tour Operator**
- **Destination Advisor**
- **Travel Writer**

- **Airline Ground Staff**
- **Airline Cabin Services**
- **Airline Catering**
- **Airport Security**
- **ATC Assistants**



BHOOMI SHAH
(2014-2015 CRM Batch
SR.EXECUTIVE –
EUROPE OPERATIONS
SOTC Travel Ltd.



KRINA NISHAR
2015-2016 CRM Batch
EVENTS EXECUTIVE
Trip Navigator



JAYSHREE URANKAR
2016 - 17 CRM Batch
Operation & Sales
Executive
Quest Tours



SNEHA TIDKE
2012 - 13 CRM Batch
TOUR CONSULTANT
Travel Boutique Online



TILOTHAMA CURPAD
2013 - 14 CRM Batch
Sr. MICE Executive
Ottila Internationals



HIBA SARANG
2016 – 17 CRM Batch
CABIN ATTENDANT
QATAR AIRWAYS



JAGRUTI KOLI
2012–2013 CRM Batch
LEAD CABIN ATTENDANT
INDIGO AIRLINES



RASHMI AAHUJA
1999 - 2000 CRM Batch
Divisional Head
MSC Cruises India Administration



SALSA MENDONCA
(2015-16 CRM batch)
Maritime Security Officer
Carnival Curise Lines
(Miami Florida)



**KAJAL
JAISWAL**
2018 - 19 CRM
Batch

**Business Developer &
Hospitality Coordinator**
Blissful Bites
**Bistro &
Patisserie**



RAJASHREE MAITY
(2015 – 16 CRM Batch)
Entrepreneur
Restaurant Owner: WTC Pasta



RUJUTA U THAKUR
2014-2015 CRM Batch
PATISSERIE CHEF
ITC Hotels



REEMA KELEKAR
(2010 – 11 CRM Batch)
Founder Director -Blissful Bites
Bistro& Patisserie
Founder & Proprietor -
Solitaire Media Entertainment



HRIDAYA KANANI

2011 - 12 CRM Batch
Assistant Manager
Viacom 18 Media Pvt. Ltd.



MANSI JANI

2016 - 17 CRM Batch
EXECUTIVE MANAGER
Book My Show
Events & Operations



NIKHITA VORA

Academic Year: 2009-2010
Deputy Manager
Shobiz Experiential
Communications Pvt. Ltd.



CHAITALEE KULKARNI

2010 - 11 CRM Batch
Assistant Manager
NYKAA Writeup

Ergonomics

- Introduction to Ergonomics (Th) – S.Y.B.Sc. (sem 4)
- Human Performance at Environment Extremes (Th) – T.Y.B.Sc. (sem 5)
- Workplace Safety (Th) – T.Y.B.Sc. (sem 6)
- Ergonomics Investigation and Analysis – I (Pr) – T.Y.B.Sc. (sem 5)
- Ergonomics Investigation and Analysis – II (Pr) – T.Y.B.Sc. (sem 6)

03

- Ergonomics is a branch of science that aims to learn about human abilities and limitations, and then apply this learning to improve people's interaction with products, systems and environments.
- Ergonomics aims to improve workspaces and environments to minimise risk of injury or harm.
- So as technologies change, so too does the need to ensure that the tools we access for work, rest and play are designed for our body's requirements.





anthropometer



branches measurement



small spreading caliper



sliding caliper



large spreading caliper



Model 113
 Large Instrument Bag
 Includes:
 Model 101
 Model 102
 Model 104
 Model 106 OR 107



Posture and Energy expenditure Analysis



US-Heat Index (Moisture Version)

		Temperatur (°C)																
		27	28	29	30	31	32	33	34	35	36	37	38	39	40	41	42	43
Relative Luftfeuchte (%)	40	27	28	29	30	31	32	34	35	37	39	41	43	46	48	51	54	57
	45	27	28	29	30	32	33	35	37	39	41	43	46	49	51	54	57	
	50	27	28	30	31	33	34	36	38	41	43	46	49	52	55	58		
	55	28	29	30	32	34	36	38	40	43	46	48	52	55	59			
	60	28	29	31	33	35	37	40	42	45	48	51	55	59				
	65	28	30	32	34	36	39	41	44	48	51	55	59					
	70	29	31	33	35	38	40	43	47	50	54	58						
	75	29	31	34	36	39	42	46	49	53	58							
	80	30	32	35	38	41	44	48	52	57								
	85	30	33	36	39	43	47	51	55									
90	31	34	37	41	45	49	54											
95	31	35	38	42	47	51	57											
100	32	36	40	44	49	54												

■ Vorsicht
 ■ Erhöhte Vorsicht
 ■ Gefahr
 ■ Erhöhte Gefahr

Environment Ergonomics Analysis



Visits to various Organisations – in and around Mumbai



CLI, Chunabhatti

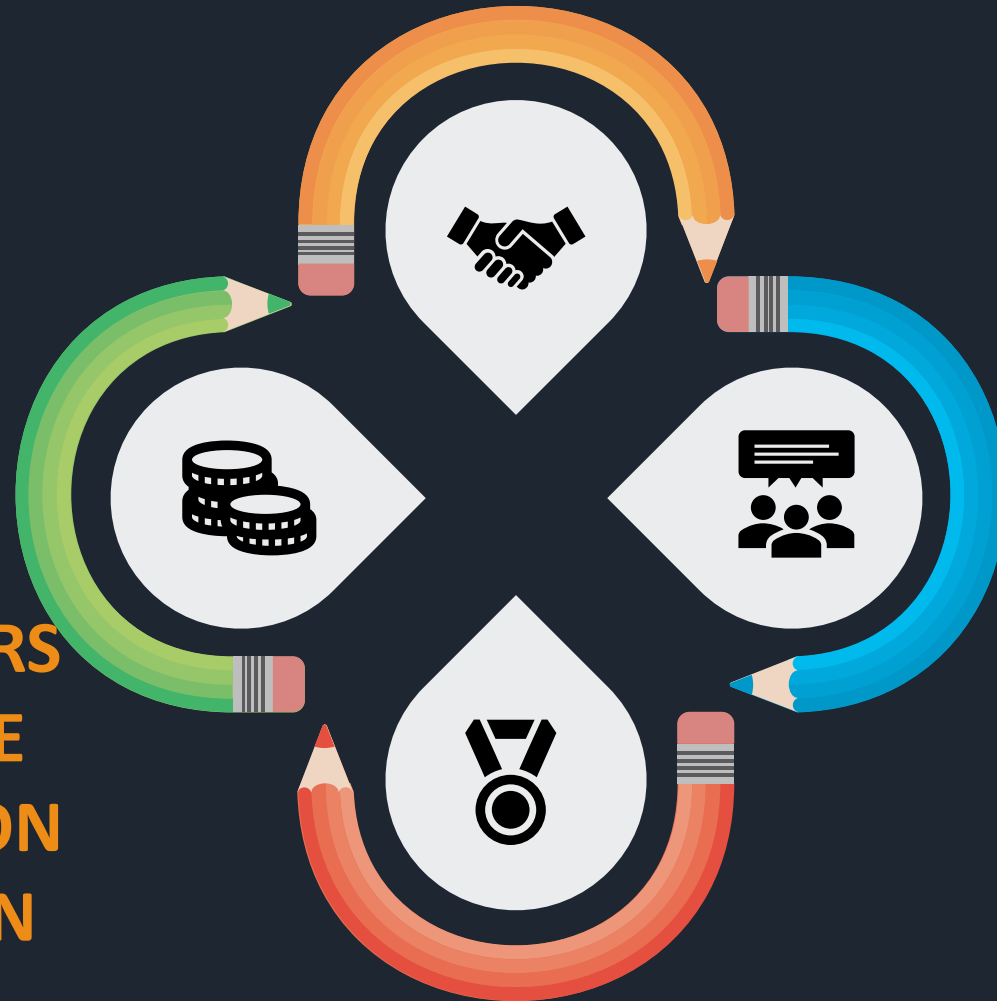


NITIE, Powai



L & T Switchgears, Mumbai

- INDUSTRIAL HYGIENIST
- OCCUPATIONAL HYGIENIST
- HEALTH & SAFETY PRACTITIONER
- SAFETY OFFICER



- QUALITY INTERNS
- QUALITY MANAGER
- WORK STUDY EXPERT

- PRODUCT DESIGNERS
- DESIGNING FOR THE SPECIAL POPULATION
- WORKPLACE DESIGN CONSULTANTS
- WORKPLACE DESIGNERS

- ERGONOMIST
- OCCUPATIONAL HEALTH CONSULTANTS
- ENVIRONMENT ERGONOMIST
- SAFETY CONSULTANT
- POSTURE ASSESSORS



IRENE FERNANDES
CRM Batch: 2012 - 2013
Customer Care Officer
Kokilaben Dhirubhai
Ambani Hospital



AWANI SHAH
2010 - 11 CRM Batch
Sr. Executive
Medical Administrator
Jehangir Hospital, Pune



Nividita Mukherjee
2012 – 2013 CRM Batch
Environment, Health &
Safety Practitioner,
UK



**SANIYA
RODRIGUES**
2017 - 18 CRM Batch
Ergonomist



Mugdha Aarya
2020-2021
CRM Batch
MSc Health Safety
& Environment
Management, U.K

Management Studies

- Principles of Management (Th) – S.Y.B.Sc. (sem 3)
- Human Resource Management (Th) – T.Y.B.Sc. (sem 5)
- Consumer Behaviour and Marketing Management (Th) – T.Y.B.Sc. (sem 5)
- Environmental Issues and challenges (Th) – T.Y.B.Sc. (sem 6)
- Total Quality Management (Th) – T.Y.B.Sc. (sem 6)
- Entrepreneurship Development (Th) – T.Y.B.Sc. (sem 6)
- Brand Management(Th) – T.Y.B.Sc. (sem 6)
- Retail Management(Th) – T.Y.B.Sc. (sem 6)
- Extension & Entrepreneurship Management (Pr) – T.Y.B.Sc. (sem 6)

04



.... Core competencies in management field.





CRM Annual Market

Scope

HUMAN RESOURCES

Staffing Director, HR Generalist, Entrepreneur, Employee Relation Manager, Training and Dev Manager, Compensation Manager

BRAND & RETAIL MANAGEMENT

Buying & Merchandising Manager, E- Store Coordinators, Display Managers, Store Managers

MARKETING & SALES

Sales Manager, Promotion Head, Product Planner, Product Forecasting Manager, Customer Service, After Sales Manager, E-Mktg Heads

PUBLIC RELATIONS

Media Relations, Customer Relations, Marketing Communicatians, Internal Relations, Public Information Officer, Social Media specialist, Technical Writer





NIDHIMEHTA

2016 -17 CRM Batch

Business Development Team

Amazon, India



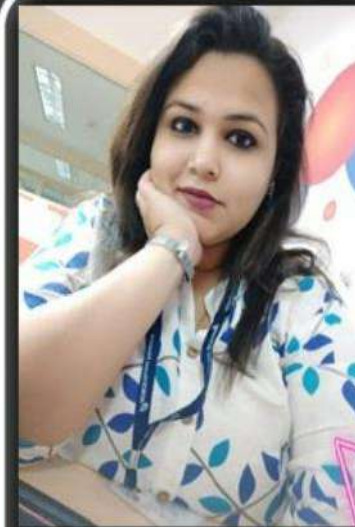
AKSHADA GAONKAR

2016-2017 CRM Batch

Talent Partner

Yala (Ireland and Mainland Europe)

Ankita Manna
2020-21 CRM
Batch
e Clerx



HIRAL SHAH

2013 - 14 CRM Batch

Regional Human Capital
Management

ICICI Home Finance



APURVA NIPHADKAR

2013 - 14 CRM Batch

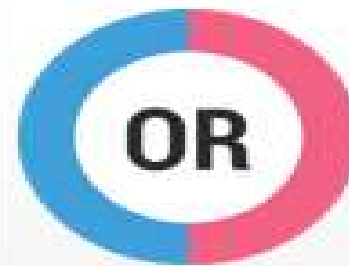
Resource Planning Manager
Larsen & Toubro InfoTech

Department of Community Resource Management,
College of Home Science Nirmala Niketan

Practical Course

1. Elective – I   (Sem V & Sem VI)
2. Elective – II   (Sem V & Sem VI)
3. Ergonomics Investigation and Analysis (Sem V & Sem VI)
4. Community Extension/ Entrepreneur Mgt (Sem V & Sem VI)

- Residential Interiors (Sem V)
- Rendering and Presentation Techniques (Sem V)
- Kitchen Planning (Sem VI)
- Residential Furnishing (Sem VI)



- Hotel Front Office (Sem V)
- Training and Development for Hospi Industry (Sem V)
- Managing HK Op (Sem VI)
- Events in the Hospitality Industry (Sem VI)

Value Added Course

“Workstation Design & Applied Ergonomics”



Course Outlines

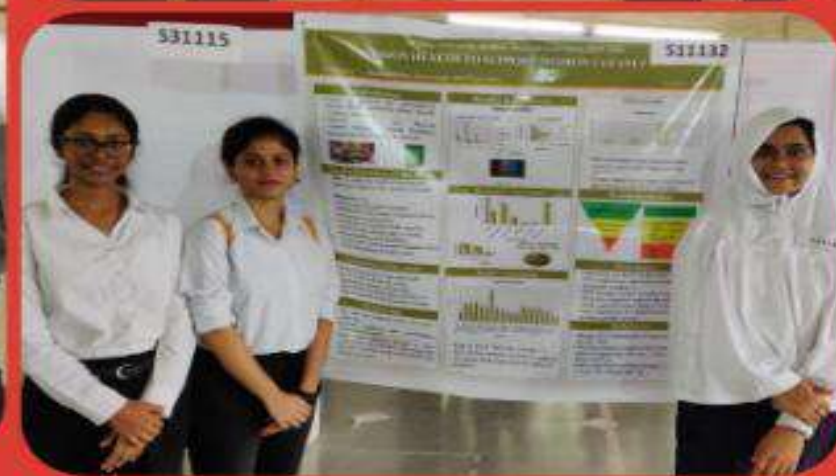
Subjects	Weightage (Marks)
Workstation Design (Th)	100
Applied Ergonomics (Th)	100
Practical	100
Project/In-depth Research	50
Viva	20
Report	30
Total	400

Avishkan 2019-20

14th Maharashtra State
Inter-University Research Convention

January 09-11, 2020

Hosted by University of Mumbai



Department of Community Resource Management,
College of Home Science Nirmala Niketan

Maharashtra State Level Gold Medal Winners



Department of Community Resource Management
College of Home Science, Nirmala Niketan



Industrial visits...



Extension Work...

Training sessions for Women



Activity with Children



Train the Trainer sessions

Workshops for Animators.



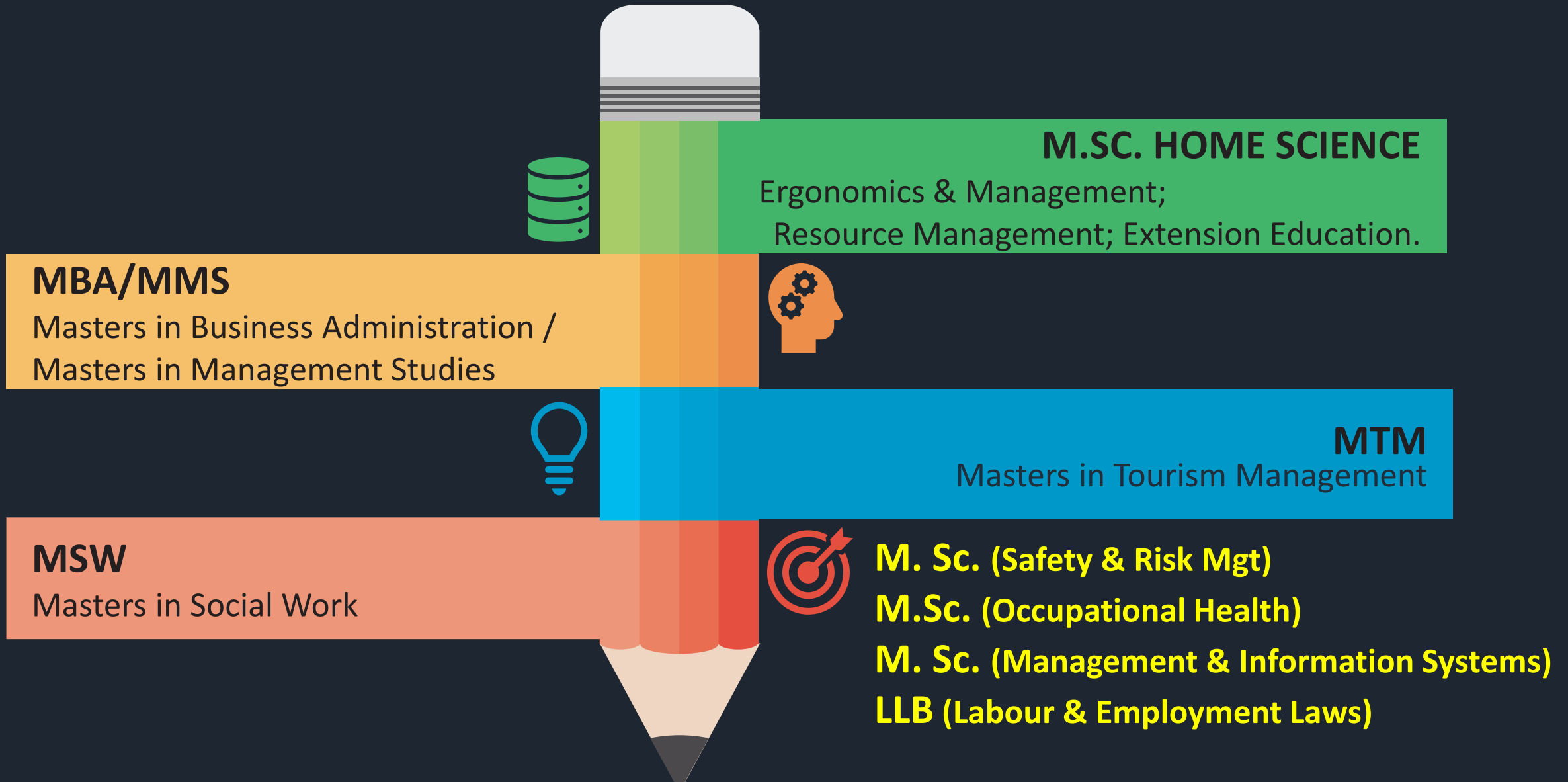
Awards & Prizes...



Gold Medal at Maharashtra State Level in the UG Category (24 Universities participated)



Multiple Education Options...



**CONSUMER
STUDIES**

INTERIOR DESIGN

**FIRST AID & FIRE
SAFETY**



ERGONOMICS

**HOSPITALITY
MANAGEMENT**

**TRAVEL &
TOURISM**

MIXOLOGY



**MANAGERIAL
FINANCE**

**HOSPITAL
MANAGEMENT**



**PRODUCT
DESIGN**

**BRAND & RETAIL
MANAGEMENT**

**BAKERY &
PATISSERIE**

**CUSTOMER
RELATIONS
MANAGEMENT**

**EVENT
MANAGEMENT**

**OCCUPATIONAL HEALTH, SAFETY
& ENVIRONMENT MANAGEMENT**

